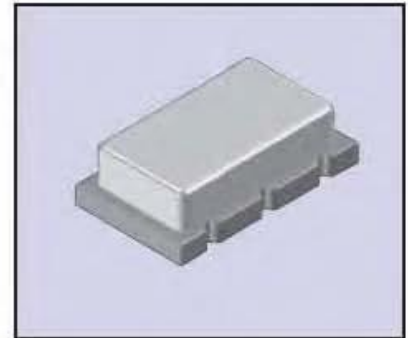


FEATURES

- \* Low profile SMD package
- \* Wide frequency range
- \* Tape & Reel packaging

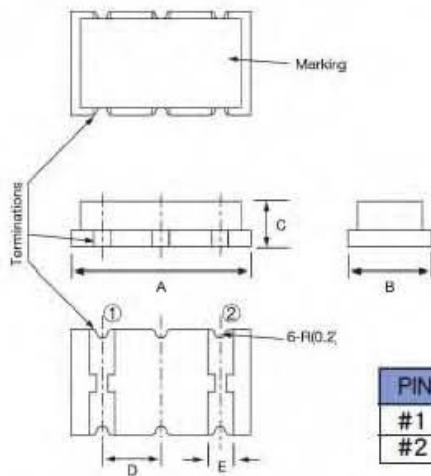
The ZTACW Series SMD ceramic resonator is an excellent low cost frequency control solution when absolute frequency accuracy is not important.



OPERATING CONDITIONS/ELECTRICAL CHARACTERISTICS

PARAMETERS	FREQUENCY RANGE (MHz)	FREQUENCY ACCURACY @ 25° (%)	STABILITY IN TEMPERATURE -20° ~ 80° C (%)	AGING FOR TEN YEARS (%)	RESONANT RESISTANCE (Ω) MAX.	INSULATION RESISTANCE @ 10 VDC	LOAD COPACITANCE (PF)
ZTACW□□□MG	24~50	±0.5	±0.3	±0.3	40	100 MΩ Mix	5

PACKAGE DIMENSIONS (mm)



PIN CONNECTIONS	
#1	In/Out
#2	Out/In

Figure 1) ZTACW Series - Top, Side, Bottom & End views

PACKAGE TYPE	DIMENSIONS (mm)				
	A	B	C	D	E
ZTACW	2.5	2.0	1.0	1.0	0.4

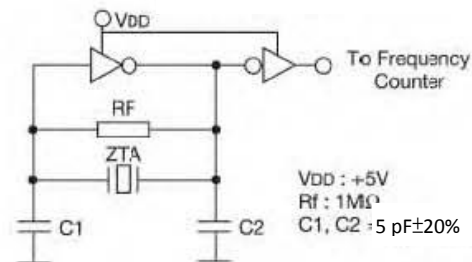


Figure 2) ZTA . MG Test Circuit

### FEATURES

- \* Low profile SMD package
- \* Wide frequency range
- \* Built-in load capacitor
- \* Tape & Reel packaging

The ZTT CW Series SMD ceramic resonator includes built-in capacitors for simplification of oscillator circuits and reduces component count. The SMD ceramic resonator is an excellent low cost frequency control solution when absolute frequency accuracy is not important.



### OPERATING CONDITIONS/ELECTRICAL CHARACTERISTICS

PARAMETERS	FREQUENCY RANGE (MHz)	FREQUENCY ACCURACY @ 25 <sup>o</sup> (%)	STABILITY IN TEMPERATURE -20 <sup>o</sup> ~ 80 <sup>o</sup> C (%)	AGING FOR TEN YEARS (%)	RESONANT RESISTANCE (Ω) MAX.	INSULATION RESISTANCE @ 10 VDC
ZTT CW □□□ MG	24~ 50	±0.5	±0.3	±0.3	40	100 MΩ Mix

### PACKAGE DIMENSIONS (mm)

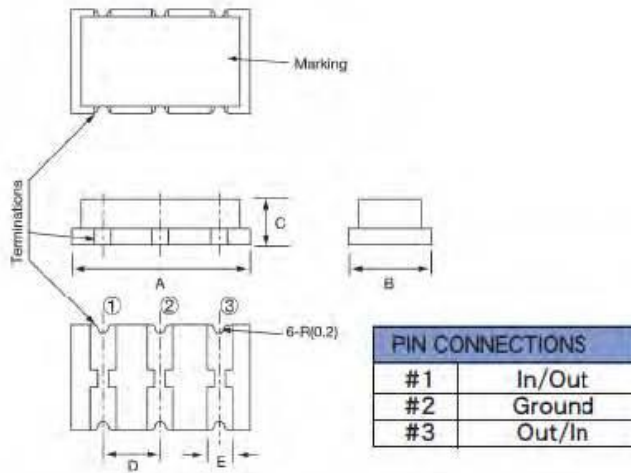


Figure 1) ZTT CW Series - Top, Side, Bottom & End views

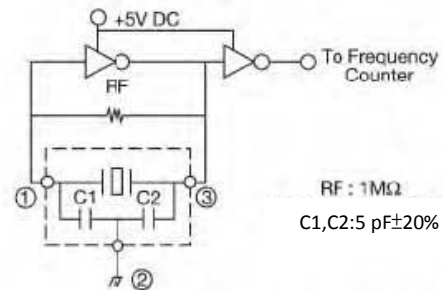


Figure 2) ZTT CW MG Test Circuit

PACKAGE TYPE	DIMENSIONS (mm)				
	A	B	C	D	E
ZTT CW	2.5	2.0	1.0	1.0	0.4